

Level 1 Adult Numeracy questions: whole numbers, decimals, fractions.

These practice questions are taken from Key Skills AoN Adult Numeracy test 21 January 2002.

You may NOT use a calculator. Bilingual dictionaries may be used.

Questions 1 to 3 are about a charity event.

1 A charity raises fifteen thousand and fifteen pounds.

What is this amount expressed in figures?

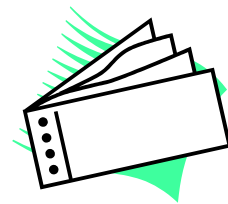
- A £1 515
- B £15 015
- C £150 015
- D £1 500 015

2 The charity organises a dance.

Two hundred and fifty people pay £1.50 each.

How much do they pay altogether?

- A £37.50
- B £375.00
- C £3 750.00
- D £37 500.00



3 At the dance 1 000 raffle tickets are sold. There are ten prizes to be won.

What fraction of tickets will win a prize?

- A  $\frac{1}{1000}$       B  $\frac{1}{990}$       C  $\frac{1}{100}$       D  $\frac{1}{10}$

Questions 4 and 5 are about the Millennium Stadium.

4 64 241 people attend a rugby match at the Millennium Stadium.

What is this number rounded to the nearest thousand?

- A 64 000
- B 64 200
- C 64 240
- D 65 000



5 The attendance at a match is thirty-two thousand five hundred and eight.

Written in figures this is:

- A 32 508
- B 32 580
- C 325 008
- D 3 200 508

Questions 6 and 7 are about a receptionist's wages.

6 A receptionist is paid £6.20 an hour.  
She works 39 hours a week.

Which of these is the **closest** estimate of her total pay for the week?

- A £6 x 30
- B £7 x 30
- C £6 x 40
- D £7 x 40



7 The receptionist saves £35 each week towards a holiday.

How can she work out how many weeks it will take to save £650?

- A  $35 \div 650$
- B  $650 \div 35$
- C  $650 - 35$
- D  $35 \times 650$

8 A gas bill shows that 1 720 units of gas have been used.  
Each unit costs 1.5p.

How much does the gas cost?

- A £2.58
- B £25.80
- C £258.00
- D £2 580.00



Questions 9 and 10 are about pizza deliveries.

9 A company makes 80 pizza delivery journeys in one week.  
The 80 journeys cover 480 miles altogether.

What is the average journey distance?

- A 0.6 miles
- B 6 miles
- C 60 miles
- D 400 miles



10 The pizza delivery bike does 20 miles to each litre of petrol.  
Petrol costs 75p per litre.

Which calculation gives the total cost of the petrol in pence for the 480 miles travelled in the week?

- A  $(480 \div 75) \times 20$
- B  $(480 - 20) \times 75$
- C  $(480 \div 20) \times 75$
- D  $(480 - 20) \div 75$

11 In one year, 5 471 young people went to Buckingham Palace to receive an award.

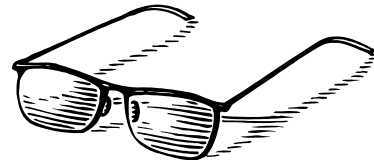
How many is this to the nearest 100?

- A 5 000
- B 5 400
- C 5 470
- D 5 500

12 An optician examines 24 patients. Three quarters of them need spectacles.

How many of the patients need spectacles?

- A 6
- B 15
- C 18
- D 20



Question 13 is about a theme park

13 The table shows the entry prices for a theme park.

A group of six teenagers and one 9 year old visit the theme park.

Family Ticket (2 adults & 2 children)	£38.00
Adult (10 years and over)	£ 11.50
Children (3-9 years)	£ 10.50
Senior Citizens	£ 7.50
Groups (Minimum number 20)	£ 9.75

Which calculation gives their total entry cost?

- A  $£9.75 \times 7$
- B  $£9.75 \times 6 + £10.50$
- C  $£10.50 \times 6 + £11.50$
- D  $£11.50 \times 6 + £10.50$



Question 14 is about a cinema.

The table shows the number of people who attend different showings of a film.

2:30pm	4:30pm	7:00pm	9:30pm
150	175	225	250

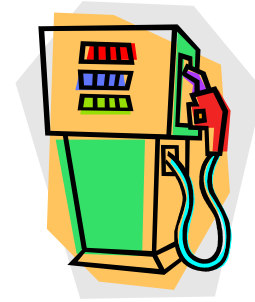
14 One hundred of those who attend the 2:30pm showing are Senior Citizens.

What fraction is this?

- A  $\frac{1}{3}$
- B  $\frac{2}{5}$
- C  $\frac{2}{3}$
- D  $\frac{4}{5}$

Questions 15 to 17 are about a car.

- 15 Petrol costs 78.9p per litre.  
 A driver buys 10 litres.  
 A correct way to write the total cost is
- A £78.90
  - B 7 890p
  - C £7.89p
  - D £7.89

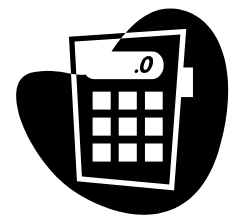


- 16 The driver travels 150 miles and uses 20 litres of petrol.  
 Which calculation shows how many miles on average the car travels on 1 litre?
- A  $150 \times 20$
  - B  $150 \div 20$
  - C  $20 \times 150$
  - D  $20 \div 150$

- 17 On average the amount of petrol the driver uses in a full week is three times the amount he uses at a weekend.  
 The driver uses 24 litres in a typical weekend.  
 How much petrol does he use in a typical week?
- A 8 litres
  - B 18 litres
  - C 72 litres
  - D 96 litres

- 18 A student uses his calculator to work out  $7\,000 \div 23$ .  
 This is the display on his calculator:

304.34782



- What is his answer rounded to the nearest whole number?
- A 300
  - B 304.3
  - C 304
  - D 305

Please write your answers in the table below.

1	2	3	4	5	6	7	8	9	10
11	12	13	14	15	16	17	18	Total	

**Answer key – Level 1 Number practice questions**

1	2	3	4	5	6	7	8	9	10
B	B	C	A	A	C	B	B	B	C
11	12	13	14	15	16	17	18	Total	
D	C	D	C	D	B	C	C		

**Notes**

- These questions were originally used at the end of Term 1 in an adult pre-GCSE maths class. They could be used for homework or as an in-class mini test (allow about half an hour).
- All questions have been copied and pasted (with permission from QCA) from previous City and Guilds Application of Number or Adult Numeracy tests.
- Additional clip art has been added to some questions. There were two reasons for this: it makes the test more 'friendly' and is helpful for ESOL numeracy students.

**Curriculum coverage**

- N1 (whole numbers): questions do not cover ratio and proportion (**this was covered** in Term 2 of our class – see below).
- N2 covers all elements except percentages (these were covered in Term 2 – see below) and calculators.

**Adult pre-GCSE Maths**

- An interactive scheme of work for this course (covering all Level 1 and Level 2 numeracy elements) will be appearing on the site in Autumn 2003.
- Related documents already on site include:
  - Mapping document (uses Edexcel Foundation GCSE Maths text book).
  - Half term assessment (covers all N1, L1 & L2, elements except ratio and **proportion, and** algebra \ substitution) and answer sheet.
  - Miscellaneous Level 1 and 2 worksheets.